

# The 25 April Mw7.8 Earthquake in Nepal Damage Assessment

広域被害把握研究分野

(Lab. of Remote Sensing and Geoinformatics for Disaster Management)

Shunichi Koshimura

Erick Mas

Yanbing Bai

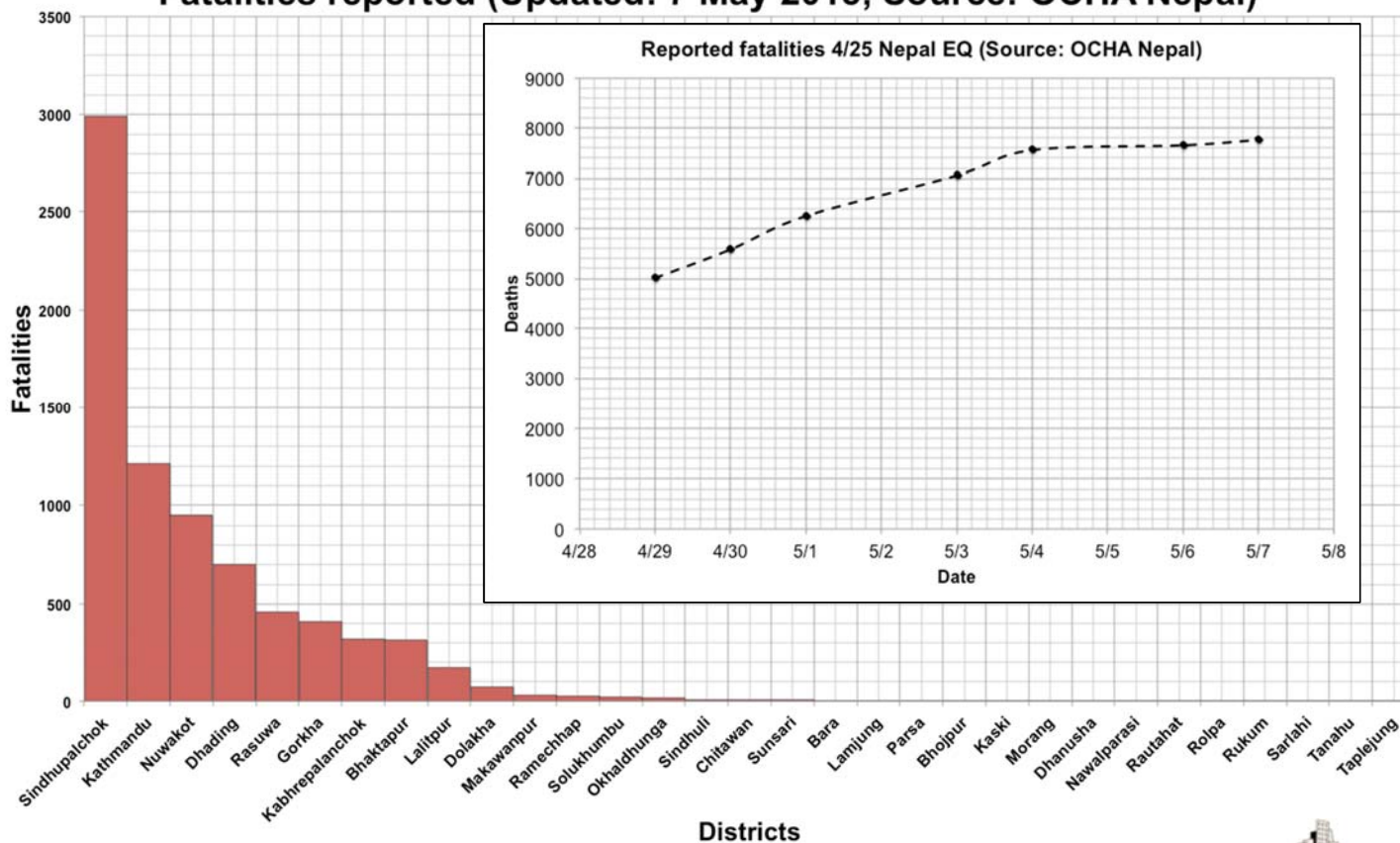
Bruno Adriano

Hideomi Gokon (Univ. of Tokyo)

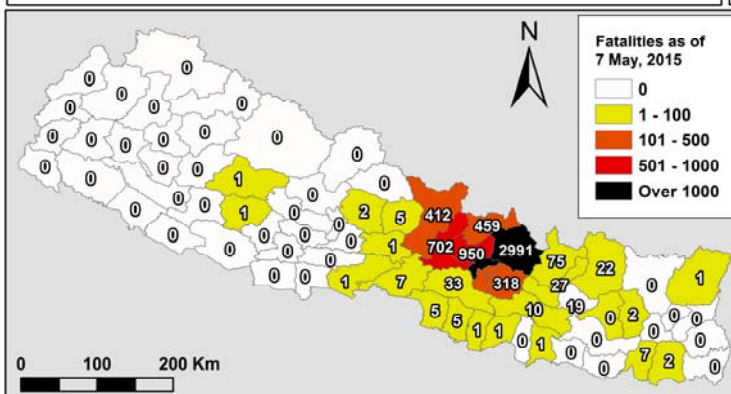
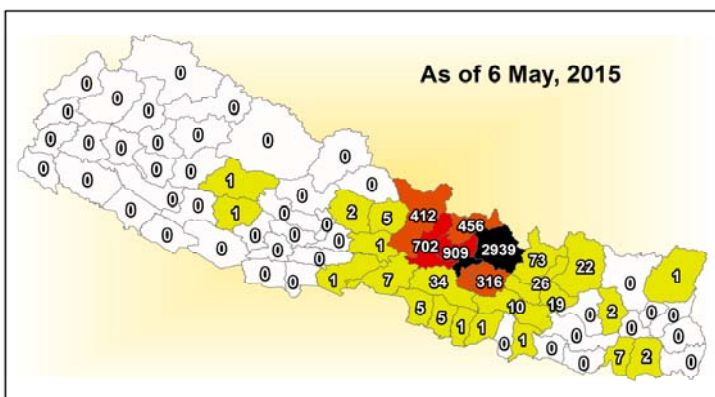
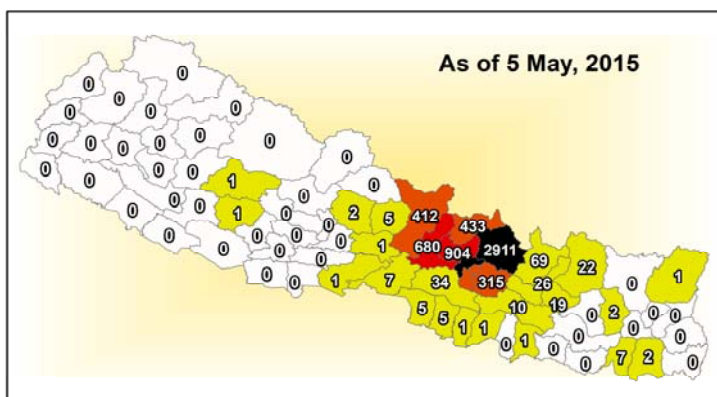
## Activities (Updates)

- Fatality and Building damage reports
- Structural Damage Estimation
  - Visual Interpretation
  - Automatic method for wide areas

### Fatalities reported (Updated: 7 May 2015, Source: OCHA Nepal)



### The 25 April Earthquake in Nepal Damage Assessment Fatality Reports



Data source: OCHA Nepal distributed by HDX

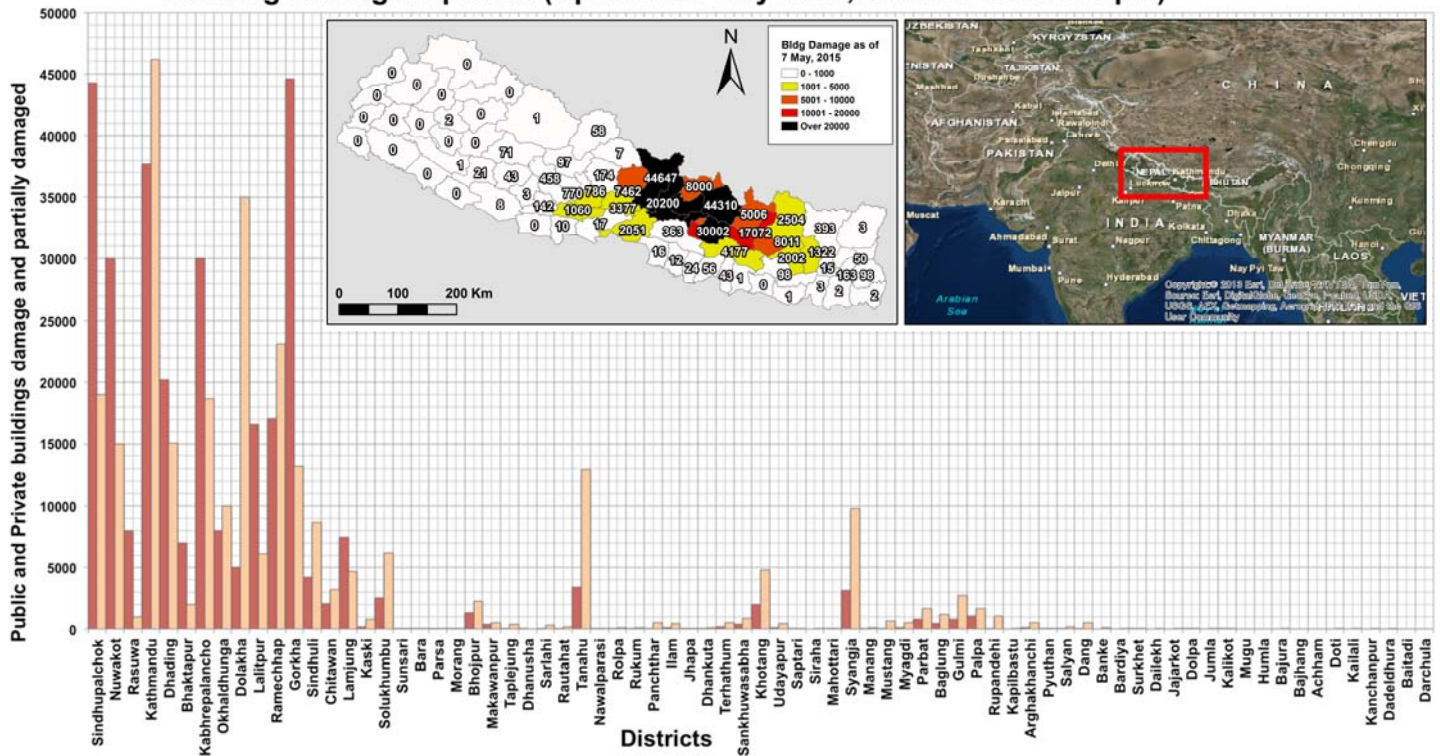
Current maximum fatality report:  
**TOTAL: 7,759 (as of 7 May)**  
 Sindhupatchok: 2,991  
 Kathmandu: 1,210



# The 25 April Earthquake in Nepal Damage Assessment Building Damage Reports

07/05/2015

## Building Damage reported (Updated: 7 May 2015, Source: OCHA Nepal)

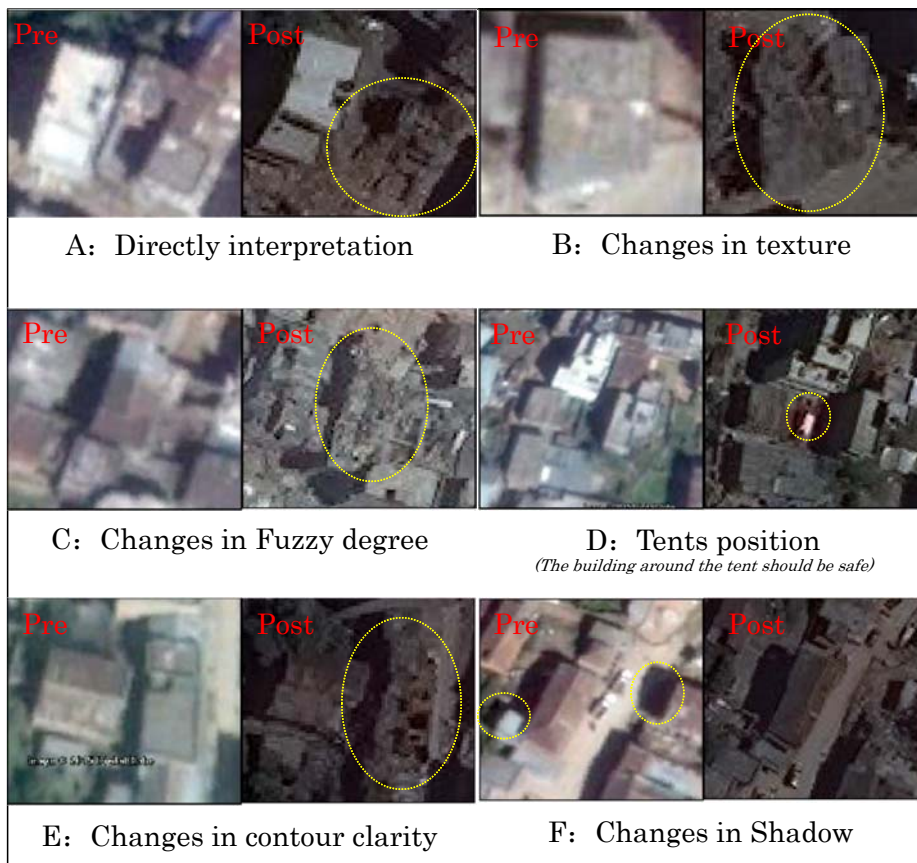


Current maximum damage report (as of 7 May):  
 Damage Bldgs.: 299,588  
 Partially Damage Bldgs.: 273,657



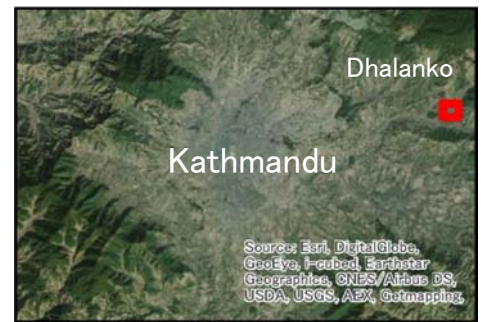
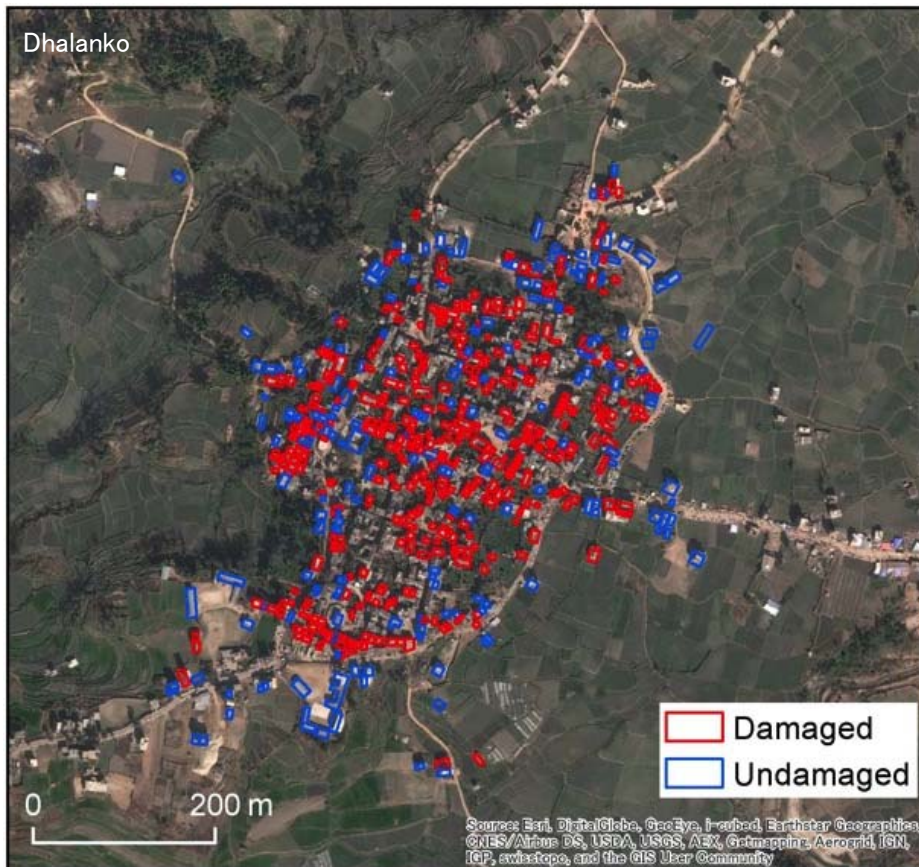
# The 25 April Earthquake in Nepal Damage Assessment Satellite Remote Sensing, Damage Visual interpretation

07/05/2015



# The 25 April Earthquake in Nepal Damage Assessment Satellite Remote Sensing, Damage Visual interpretation

07/05/2015



Pre-event data Source: Google Earth  
Pre-event acquisition date :2014/11/13

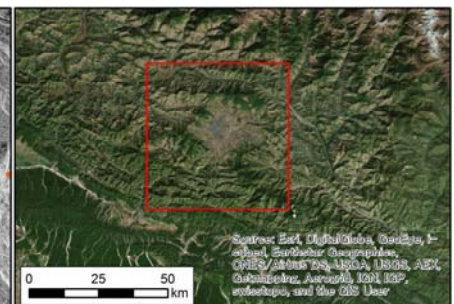
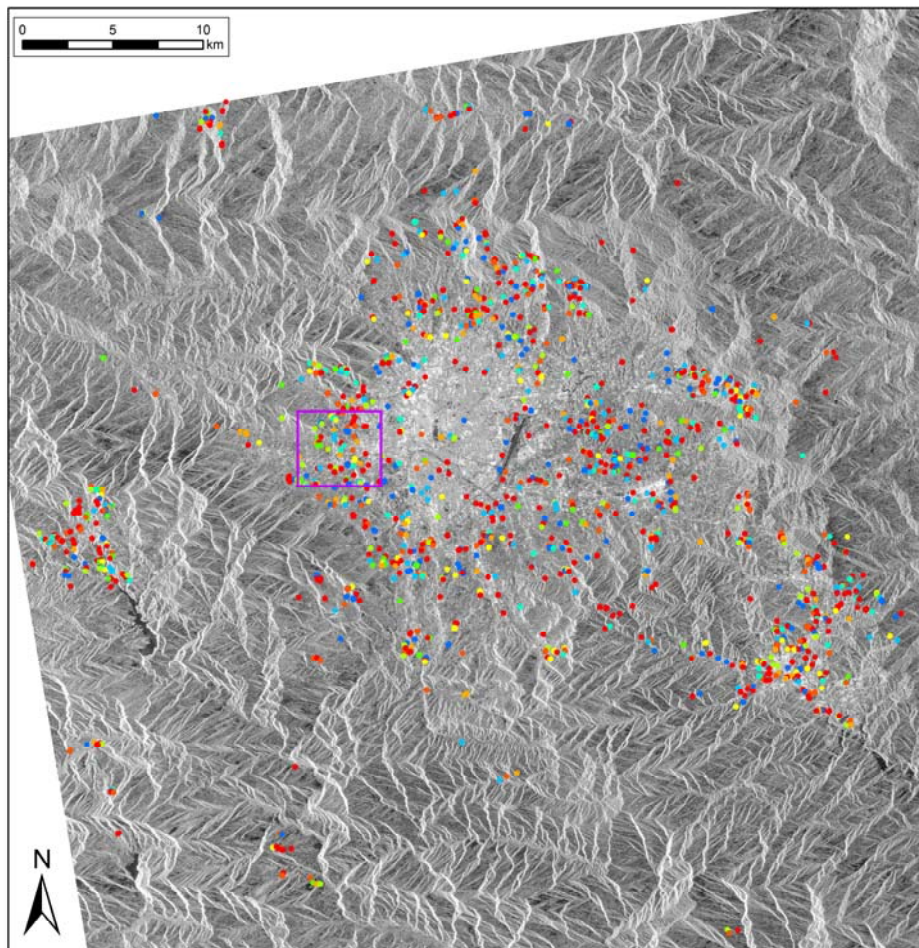
Post-event data Source: Digital Globe  
Post-event acquisition date : 2015/05/03

Map Information  
Damage Visual interpretation result  
Damaged building :426  
Undamaged building: 197



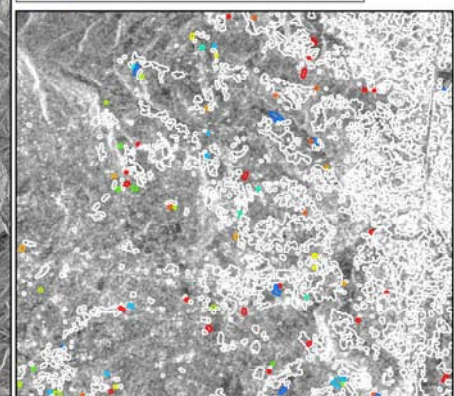
# The 25 April Earthquake in Nepal Damage Assessment Satellite Remote Sensing, PALSAR-2 (Damage Estimation)

07/05/2015



**Legend**  
**Damage Ratio**

	0.91 - 1.00		0.41 - 0.50
	0.81 - 0.90		0.31 - 0.40
	0.71 - 0.80		0.21 - 0.30
	0.61 - 0.70		0.11 - 0.20
	0.51 - 0.60		0.00 - 0.10



Thank you