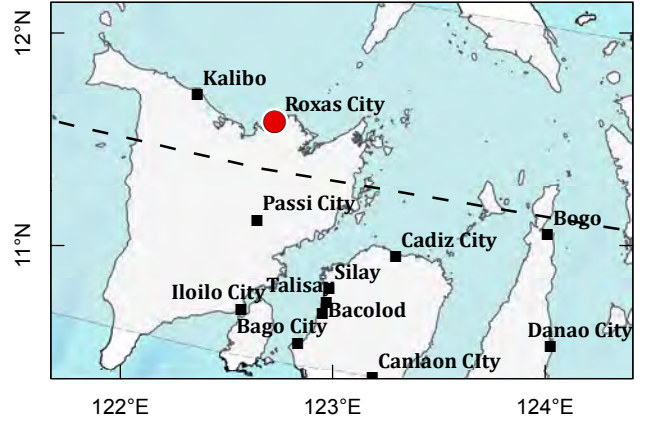


Roxas City - Damage Interpretation Libas and Barra areas

Damage Interpretation

- High damage or destroyed
- Low damage or survived

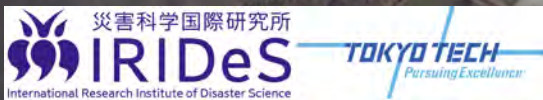
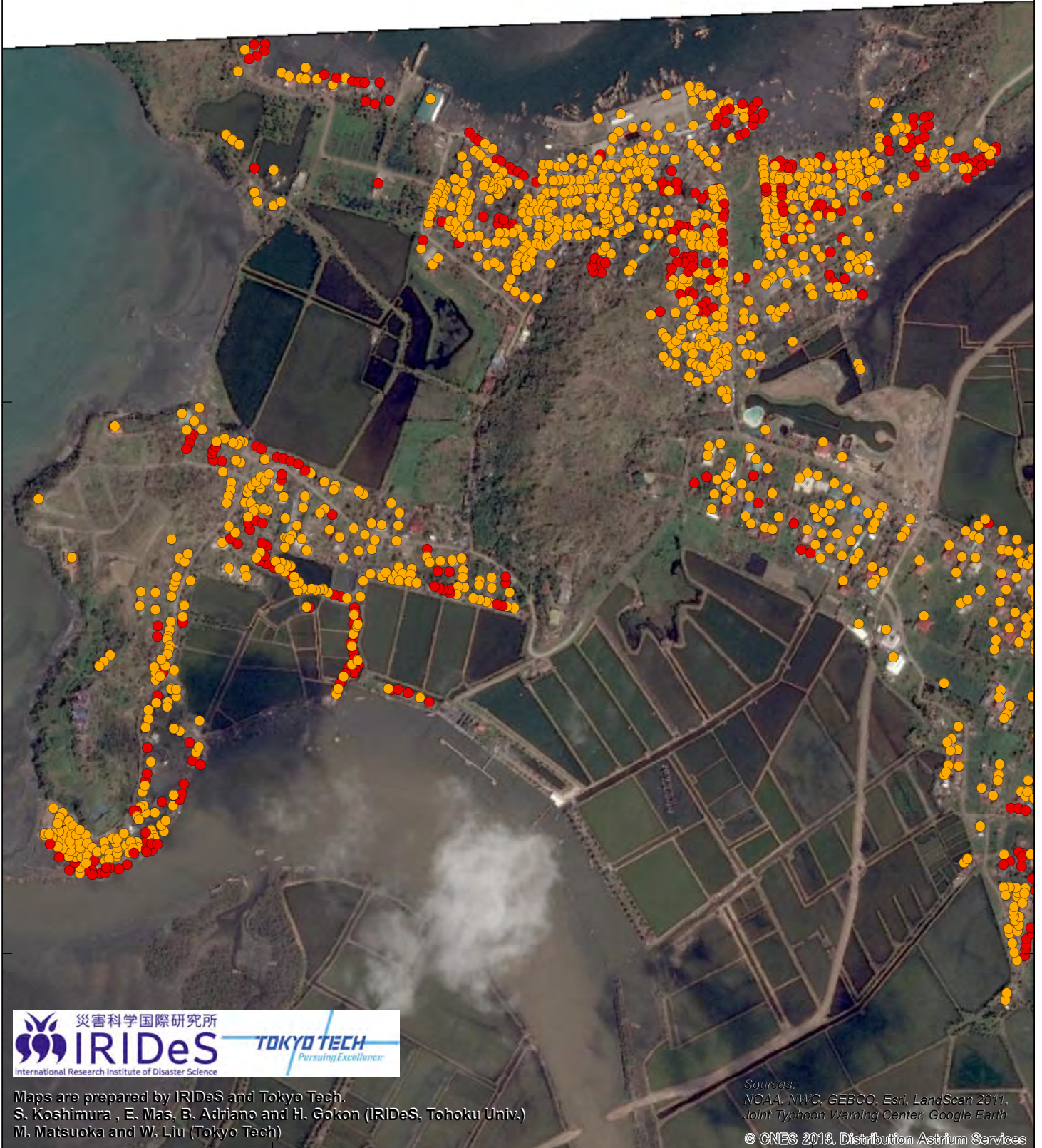
Note: Building damage interpretation is based on satellite images



11°36'N

11°35'30"N

11°35'N



Maps are prepared by IRIDeS and Tokyo Tech.
S. Koshimura, E. Mas, B. Adriano and H. Gokon (IRIDeS, Tohoku Univ.)
M. Matsuoka and W. Liu (Tokyo Tech)

Sources:
NOAA, MWC, GEBCO, Esri, LandScan 2011,
Joint Typhoon Warning Center, Google Earth

© CNES 2013, Distribution Astrium Services

122°43'E

122°43'30"E