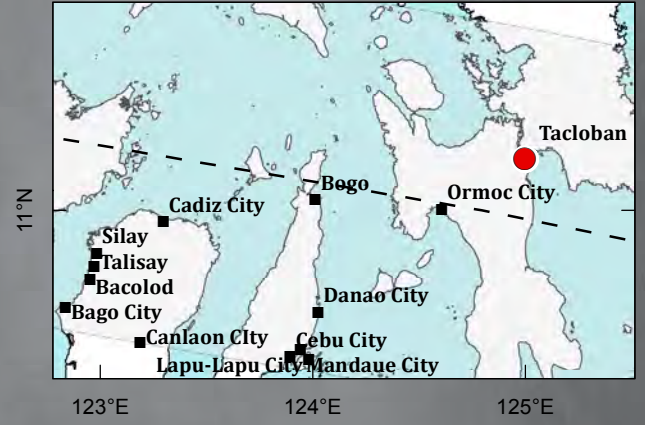
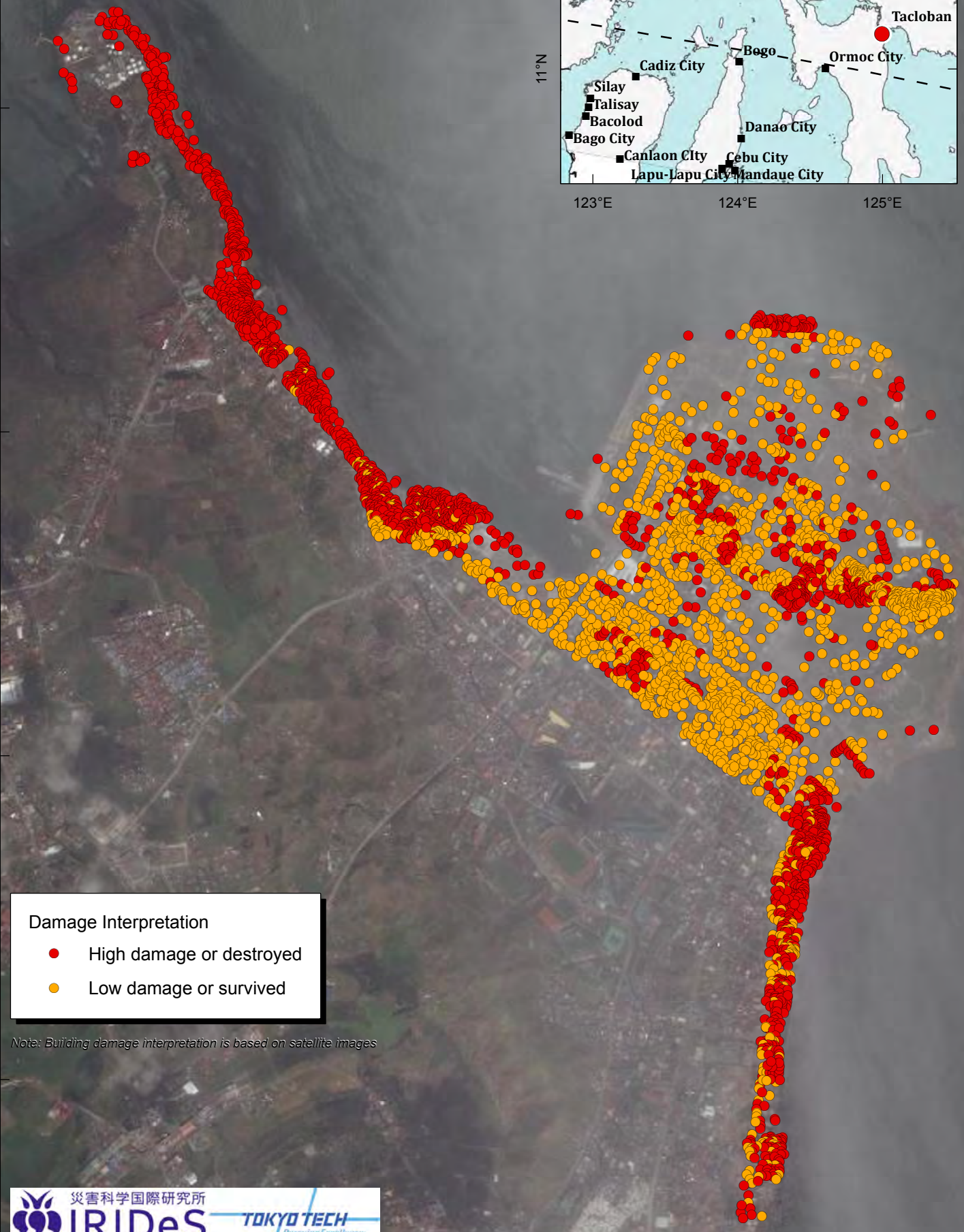


Tacloban City - Damage Interpretation



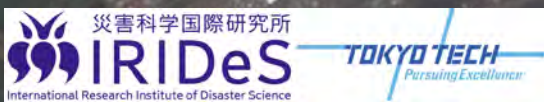
11°15'30"N
11°15'N
11°14'30"N
11°14'N



Damage Interpretation

- High damage or destroyed
- Low damage or survived

Note: Building damage interpretation is based on satellite images



Maps are prepared by IRIDeS and Tokyo Tech.
S. Koshimura, E. Mas, B. Adriano and H. Gokon (IRIDeS, Tohoku Univ.)
M. Matsuoka and W. Liu (Tokyo Tech)

Sources:
NOAA, NWC, GEBCO, Esri, LandScan 2011,
Joint Typhoon Warning Center, Google Earth

© CNES 2013, Distribution Astrium Services

124°59'30"E

125°E

125°0'30"E