

A new division system started in April 2021, to promote stronger and more flexible research and practice.



The logo of IRIDeS is the kanji 災 (disaster) turned upside down, showing our determination to "turn disaster into good fortune."

**Risk Evaluation and Disaster Mitigation Research Division**

- Subduction Earthquake Lab
- Earthquake Engineering Lab
- Tsunami Engineering Lab
- Oceanic, Atmospheric and Outer Space Disaster Lab
- Inland Earthquake and Volcano Lab
- Computational Safety Engineering Lab
- Disaster Geo-informatics Lab
- Disaster Robotics Lab

**Disaster Humanities and Social Science Division**

- Disaster Culture and Archive Studies
- Preservation of Historical and Cultural Heritage Lab
- International Strategy for Disaster Mitigation Lab
- Spatial Design Strategies Lab
- Cognitive Sciences Lab
- Regional Resilience Planning Lab

**Disaster Medical Science Division**

- International Cooperation for Disaster Medicine Lab
- Disaster Medical Informatics Lab
- Disaster Psychiatry Lab
- Disaster Public Health Lab
- Oral Health and Disaster Medicine Lab
- Radiological Disasters and Medical Science Lab
- Disaster Obstetrics and Gynecology Lab
- Infectious Diseases Lab

**Practical Research and Collaboration Division**

- Disaster Education Research and Implementation Lab
- Disaster Resilient Society Promotion Lab
- 2030 Global DRR Agenda Office
- Resilient EICT Research Promotion Office
- International Research Collaboration Office

**Endowed Research Division**

- Earthquake Induced Tsunami Risk Evaluation Lab (Tokio Marine and Nichido Fire Insurance)
- Earthquake Disaster Prevention for Urban Areas Lab (OYO Corporation)

**Joint Research Division**

- AEON Disaster-Resilient and Environment-Friendly City Creation Joint Research Lab
- Nippon Koei Resilient City with Digital Twin Technologies Joint Research Lab

Co-creation Center for Disaster Resilience

Global Centre for Disaster Statistics

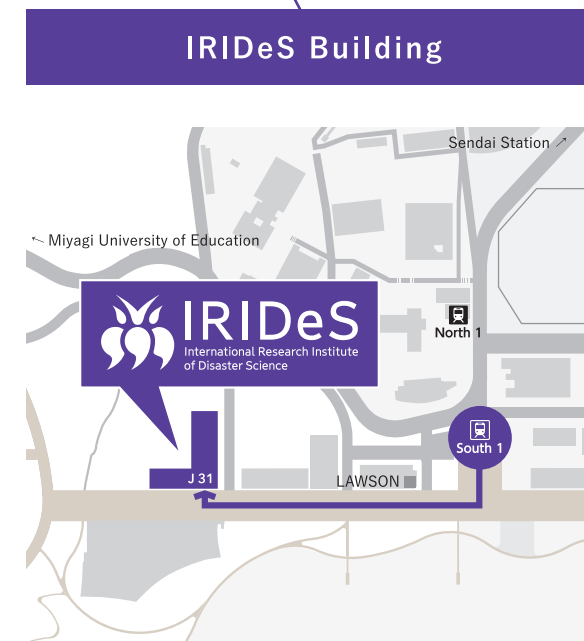
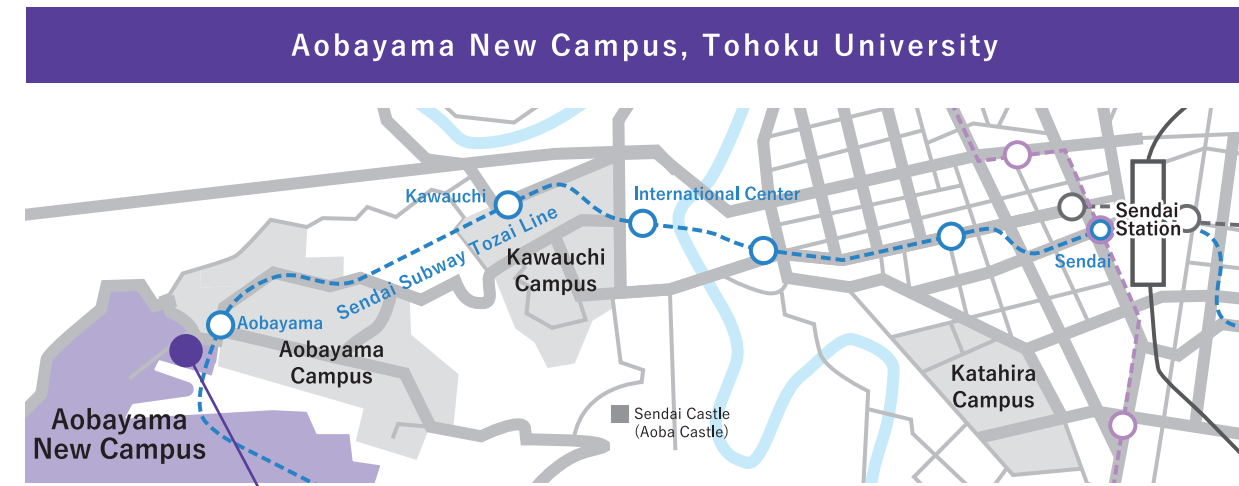
Kesennuma Satellite Office

Administration Office

Public Relations Office

April 2012	IRIDeS established at Tohoku University, with Prof. Arata Hirakawa as its first Director
April 2013	Satellite Office was established in Kesennuma City, Miyagi Prefecture
April 2014	Prof. Fumihiko Imamura becomes the second Director of IRIDeS
September 2014	The IRIDeS building was opened in the Aobayama New Campus
March 2015	Supported The Third UN World Conference on Disaster Risk Reduction held in Sendai. Sendai Framework for Disaster Risk Reduction 2015-2030 became international policies.
April 2015	IRIDeS and United Nations Development Programme (UNDP) establish the Global Centre for Disaster Statistics
From 2017	The "World Bosai Forum/ International Disaster Risk Conference" starts to be held in Sendai City biannually
March 2021	Convened a symposium on the 10th anniversary of the Great East Japan Earthquake. Presentations edited as a book entitled <i>51 Approaches to Disaster Science: Lessons from the 2011 Great East Japan Earthquake</i> .
April 2021	A new division system implemented
April 2022	Co-creation Center for Disaster Resilience was established at IRIDeS

ACCESS



**SUBWAY**  
Take the Sendai Subway Tozai Line from Sendai Sta., get off at Aobayama Sta. and walk for 3 min. from South 1 Exit.

**TAXI**  
20 min. from Sendai Sta. by taxi (approx. 1,600 yen, depending on conditions).

9-1 Hajikamisemukai, Kesennuma, Miyagi 988-0246  
Free parking available. Accessible also via public transportation. For more information, visit the following website. <https://kesennuma-memorial.jp/english/>



**IRIDeS, Tohoku University**

468-1 Aramaki Aza-Aoba, Aoba-ku, Sendai Japan 980-8572  
<https://irides.tohoku.ac.jp/eng/>

General Affairs, Administration Office | TEL: +81-22-752-2011 FAX: +81-22-752-2013  
E-mail: [irides-syomu@grp.tohoku.ac.jp](mailto:irides-syomu@grp.tohoku.ac.jp)  
Public Relations Office | TEL: +81-22-752-2049  
E-mail: [koho-office@irides.tohoku.ac.jp](mailto:koho-office@irides.tohoku.ac.jp)



International Research Institute of Disaster Science

IRIDeS





# GREETINGS



Director and Professor  
Fumihiko Imamura

## Unravelling the Inner-Workings of Natural Disasters and Contributing to Disaster Risk Reduction Worldwide Beyond National and Cultural Borders

The International Research Institute of Disaster Science (IRIDeS) was founded approximately one year after the 2011 Great East Japan Earthquake, as Tohoku University's newest research institution. On March 11, 2011, a massive earthquake and its resulting tsunami devastated the Pacific coast of Tohoku and much of East Japan; an estimated 20,000 people lost their lives in the disaster. The magnitude of this tragedy was amplified further by the accident at the Fukushima Daiichi Nuclear Power Plant. It became an unprecedented compound disaster with potential long-lasting effects the likes of which has been rarely seen throughout human history. Learning from the lessons learned, Tohoku University launched the IRIDeS in April 2012 with the mission of never repeating such a major disaster again.

At IRIDeS, some 100 researchers work in the fields of humanities, science, engineering, and medicine. Achievements to date include elucidating the mechanisms of mega-earthquakes and tsunamis, developing a disaster archive, and promoting the implementation of the "Sendai Framework for Disaster Risk Reduction 2015-2030." We are making efforts in forging links with industry, government, academia, and citizens both in Japan and overseas, to work together on both the revival of Tohoku disaster-affected areas and disaster risk reduction worldwide.

We would appreciate your continued support in the future.

# PHILOSOPHY

## Founding principles based on lessons learned from the Great East Japan Earthquake

1

Bring together the wisdom of Tohoku University to contribute to the recovery of the disaster area

2

Promote the world's most advanced research on natural disaster science in cooperation with organizations both in Japan and overseas

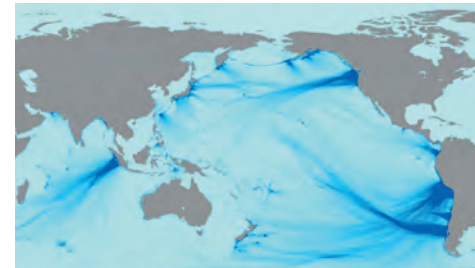
3

Build the foundations for practical research on disaster risk reduction to mitigate mega disasters at home and abroad

# ORGANIZATION

## Risk Evaluation and Disaster Mitigation Research Division

Conducts advanced research on disaster evaluation and response, both in Japan and abroad, through the integration of science and engineering. This division also presents concrete proposals that will lead to disaster risk reduction.



## Disaster Humanities and Social Science Division

Contributes to disaster risk reduction and recovery by studying regional societies across the globe, in particular in their relation to human mind and behavior, architecture, social infrastructure, in order to pass on lessons learned to future generations.



## Disaster Medical Science Division

Conducts research on the continuum between pre-disaster to recovery, aiming at establishing disaster medicine for wide-area and complex disasters, and introducing the latest science and technology to the field.



## Practical Research and Collaboration Division

Works both on practical studies and on application of research outcomes through regional and international cooperation, contributing to the implementation of the Sendai Framework for Disaster Risk Reduction.



## Endowed Research Division

Conducts research and education activities with donations from corporations.

## Joint Research Division

Aims at practical use of research outcomes, working with funds and researchers from companies.

## Co-creation Center for Disaster Resilience

Builds "convergence of knowledge" with diverse stakeholders to maximize disaster resilience.

## Global Centre for Disaster Statistics

Contributes to global disaster risk reduction by collecting and analyzing disaster statistics.

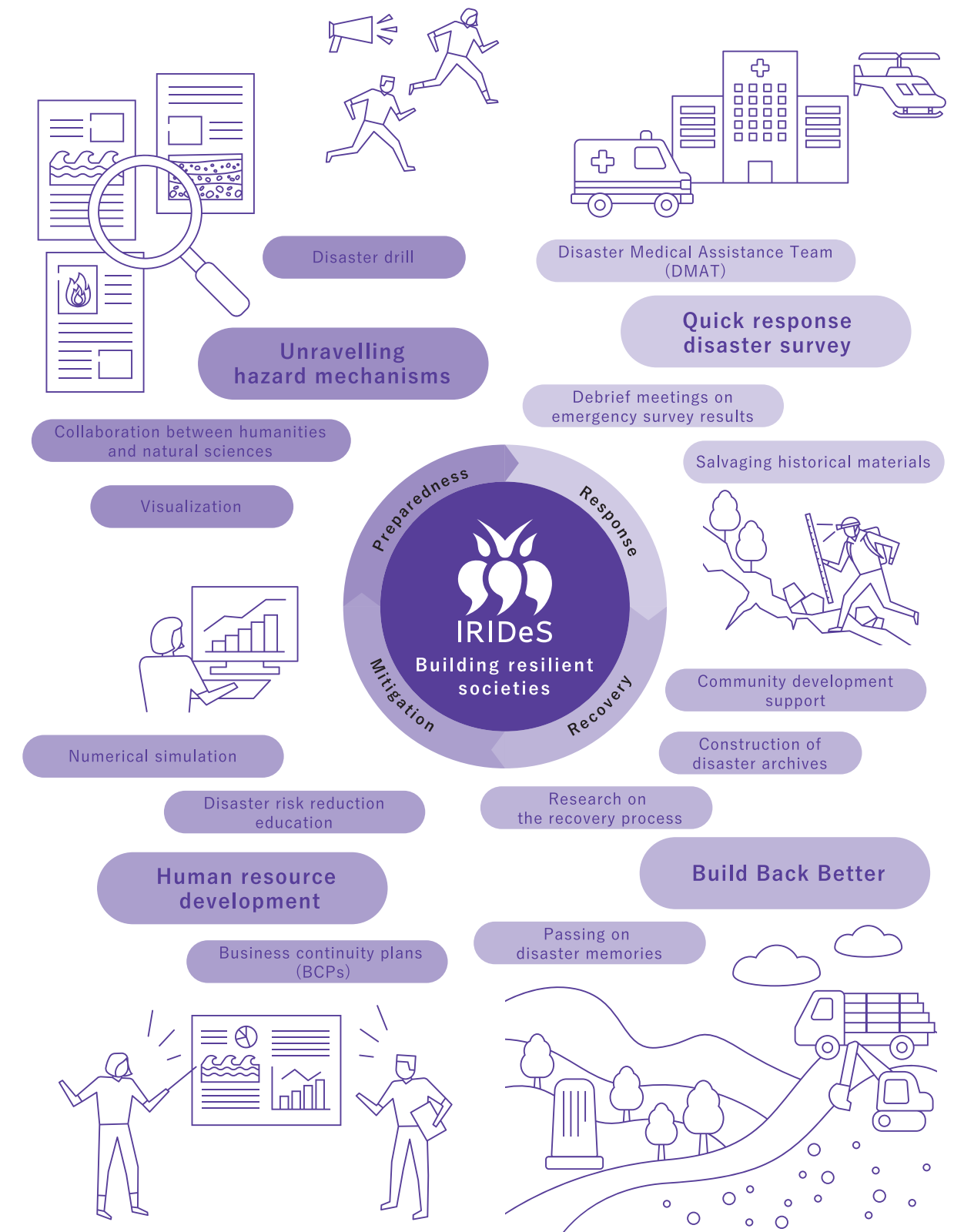
## Kesenuma Satellite Office

Shares research results and advances exchanges with practitioners and citizens.

# IRIDeS INITIATIVES

## Building resilient societies

Promote relevant global agendas starting with the Sendai Framework for Disaster Risk Reduction by analyzing the processes whereby problems become compounded in the disaster cycle.



# IRIDeS UPDATES

## Recent news

Held a debrief meeting, regarding the March 2022 earthquake off the coast of Fukushima



Characterized the 2021 Haiti Earthquake, working with citizens and international research team members



Accurately dated tsunami deposits and determined that sediment belonged to the 1611 Keicho Oshu Tsunami



Constructed online course materials for school teachers who are in charge of disaster education and management



Engaged in medical judgment at the Miyagi Prefectural COVID-19 Medical Coordination Headquarters

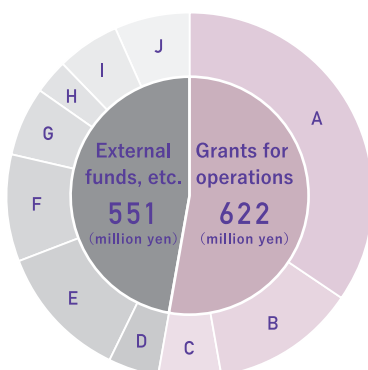


Revealed details of the 1804 earthquake through examination of historical village records



For more information, please visit the IRIDeS website: <https://irides.tohoku.ac.jp/eng/>

## FY 2021 financial report



**1,173** million yen

● A Grants for operations (Faculty personnel expenses)	406
● B Grants for operations (Education and research expenses)	148
● C Grants for operations (Functional enhancement expenses)	68
● D Indirect expenses	52
● E Grants-in-Aid for Scientific Research	138
● F Commissioned research expenses	111
● G Cooperative research expenses	74
● H Commissioned project expenses	33
● I Other grants	68
● J Donations	75
	(million yen)

## Number of faculty & staff members

As of May 1, 2022

**232**

### 72 Fulltime Faculty

- 26 Professors ● 22 Associate Professors ● 3 Lecturers
- 19 Assistant Professors ● 2 Research Associates

### 36 Adjunct Faculty

- 22 Professors ● 11 Associate Professors ● 1 Lecturers
- 2 Assistant Professors

### 18 Specially Appointed Professors (Visiting) and Specially Appointed Associate Professors (Visiting)

### 86 other members including Senior Researchers, Researchers and Technical Assistants

### 20 Administration Office staff members



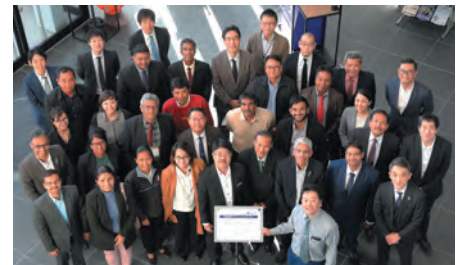
# IRIDeS UPDATES

## International collaborative projects

In cooperation with the United Nations and universities and research institutes around the world, we promote cutting-edge research and practice in the fields of disaster science and disaster risk reduction.



China, Egypt, France, Germany, Indonesia, Nepal, New Zealand, Peru, Taiwan, Thailand, UK, USA, and international organizations



### Global Centre for Disaster Statistics

led by Tohoku University, United Nations Development Programme (UNDP) and Fujitsu Ltd.

- Established the International Research Collaboration Office
- Convene the World Bosai Forum
- Lead the APRU disaster risk reduction activities
- Work with AIWEST

## Collaborative projects in Japan

We support recovery of areas affected by the Great East Japan Earthquake as well as disaster risk reduction activities of local communities.

- Community planning
- Evacuation drills
- Disaster risk reduction education



### Kesennuma Satellite Office

Promotes regional collaboration

- MoUs with local governments and educational institutions

#### Local governments

Iwate Prefecture  
Rikuzentakata City

Miyagi Prefecture  
Higashi Matsushima City, Ishinomaki City, City of Iwanuma, Kesennuma City, Marumori Town, City of Natori, City of Sendai, Tagajo City, Watari Town, Yamamoto Town

#### Educational Institutions

Aomori Prefecture  
Research Center for Technology in Infrastructure, Disaster Reduction and Social System, Hachinohe Institute of Technology

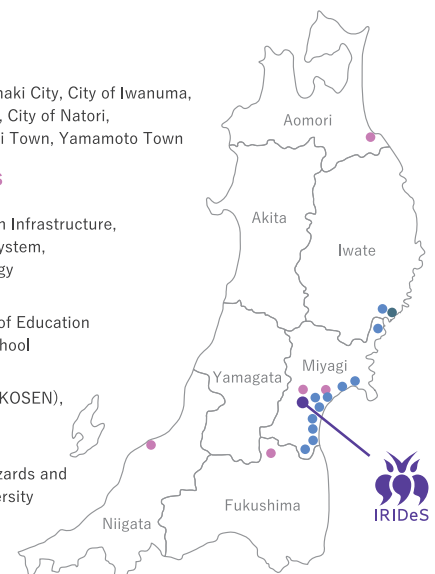
Miyagi Prefecture  
311 DRR-LIFE, Miyagi University of Education, Miyagi Prefecture Tagajo High School

Fukushima Prefecture  
National Institute of Technology (KOSEN), Fukushima College

Niigata Prefecture  
Research Institute for Natural Hazards and Disaster Recovery, Niigata University

#### Museum

Iwate Prefecture  
Iwate Tsunami Memorial Museum



We provide places to share outcomes of our research and practices with the public and to develop collaboration with diverse stakeholders

### IRIDeS Friday Forum

Held usually five times a year on Friday evenings. IRIDeS researchers and guest speakers give a presentation on a specific topic set for each forum.

### Exhibition Spaces

The 1st and 2nd floors of the IRIDeS building are open to the public to display aspects of current research.

### Others

Participation in Tohoku University Katahira Festival and Open Campus/Hold symposiums

In order to prevent the spread of virus infections, some events may be suspended or held online. Please check the IRIDeS website for the latest information.