

- **Interdisciplinarity** with researchers from engineering, science, humanities and social sciences, medicine, and disaster risk reduction specialists collaborating to pursue world-leading research
- **Practicality** that directly aims at building a resilient society and helping those affected by disasters



The logo of IRIDeS is the kanji 災 (disaster) turned upside down, showing our determination to "turn disaster into good fortune."

Risk Evaluation and Disaster Mitigation Research Division

- Subduction Earthquake Lab • Inland Earthquake and Volcano Lab
- Earthquake Engineering Lab • Computational Safety Engineering Lab
- Tsunami Engineering Lab • Disaster Geo-informatics Lab
- Oceanic, Atmospheric and Outer Space Disaster Lab • Disaster Robotics Lab

Disaster Humanities and Social Science Division

- Disaster Culture and Archive Studies • Preservation of Historical and Cultural Heritage Lab
- Cognitive Sciences Lab • International Strategy for Disaster Mitigation Lab
- Regional Resilience Planning Lab • Spatial Design Strategies Lab
- International Environment and Disaster Management Research Lab

Disaster Medical Science Division

- International Cooperation for Disaster Medicine Lab
- Disaster Medical Informatics Lab • Radiological Disasters and Medical Science Lab
- Disaster Psychiatry Lab • Disaster Obstetrics and Gynecology Lab
- Disaster Public Health Lab • Infectious Diseases Lab
- Oral Health and Disaster Medicine Lab

Practical Research and Collaboration Division

- Disaster Education Research and Implementation Lab
- Disaster Resilient Society Promotion Lab
- Communication Science for Disaster Risk Reduction Lab • Inclusive Disaster Risk Reduction Lab
- International Research Collaboration Office • 2030 Global DRR Agenda Office
- Resilient EICT Research Promotion Office

Endowed Research Division

- Earthquake Induced Tsunami Risk Evaluation Lab (Tokio Marine and Nichido Fire Insurance)
- Earthquake Disaster Prevention for Urban Areas Lab (OYO Corporation)

Joint Research Division

- AEON Disaster-Resilient and Environment-Friendly City Creation Joint Research Lab
- Nippon Koei Resilient City with Digital Twin Technologies Joint Research Lab

Co-creation Center for Disaster Resilience

Global Centre for Disaster Statistics

Kesennuma Satellite Office

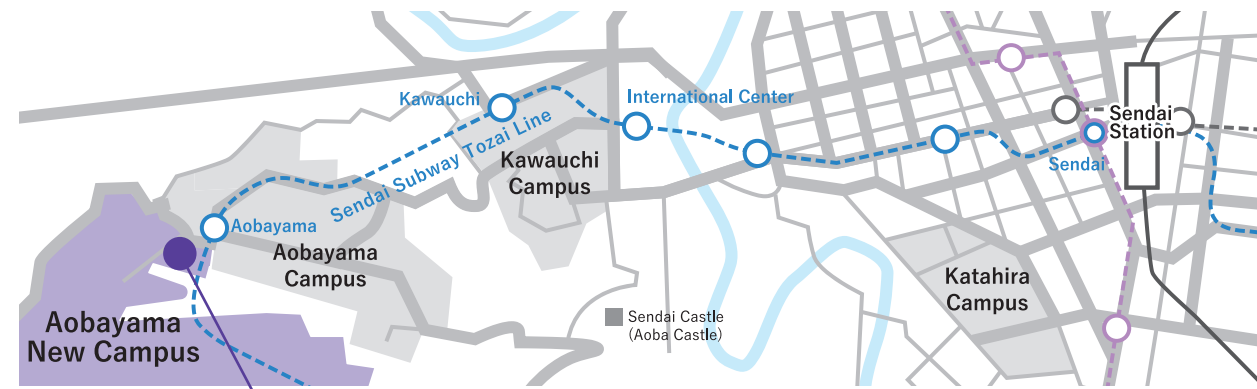
Administration Office

Public Relations Office

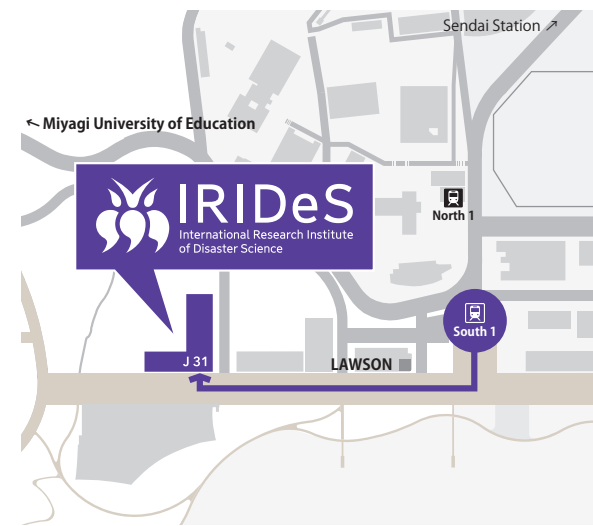
April 2012	IRIDeS established at Tohoku University, with Prof. Arata Hirakawa as its first Director.
April 2013	The Satellite Office was established in Kesennuma City, Miyagi Prefecture.
April 2014	Prof. Fumihiko Imamura became the second Director of IRIDeS.
March 2015	Supported The Third UN World Conference on Disaster Risk Reduction held in Sendai. Sendai Framework for Disaster Risk Reduction 2015-2030 adopted as a global agenda.
April 2015	IRIDeS and the United Nations Development Programme (UNDP) establish the Global Centre for Disaster Statistics.
From 2017	The World Bosai Forum starts to be held in Sendai City biannually.
April 2022	The Co-creation Center for Disaster Resilience was established at IRIDeS.
October 2022	Held a ceremony to commemorate the 10th anniversary of IRIDeS with the commemorative publication.
April 2023	Prof. Shinichi Kuriyama becomes the third Director of IRIDeS.

ACCESS

Aobayama New Campus, Tohoku University



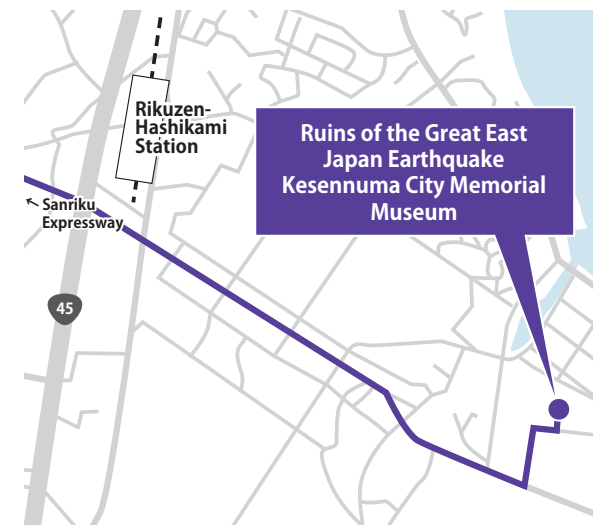
IRIDeS Building



SUBWAY
Take the Sendai Subway Tozai Line from Sendai Sta., get off at Aobayama Sta. and walk for 3 min. from South 1 Exit.

TAXI
20 min. from Sendai Sta. by taxi (approx. 1,600 yen, depending on conditions).

Kesennuma Satellite Office



9-1 Hajikamisemukai, Kesennuma, Miyagi 988-0246
Free parking available. Accessible also via public transportation. For more information, visit the following website. <https://kesennuma-memorial.jp/english/>



IRIDeS, Tohoku University

468-1 Aramaki Aza-Aoba, Aoba-ku, Sendai, Japan 980-8572
<https://irides.tohoku.ac.jp/eng/>

General Affairs, Administration Office | TEL: +81-22-752-2011 FAX: +81-22-752-2013
E-mail: irides-syomu@grp.tohoku.ac.jp
Public Relations Office | TEL: +81-22-752-2049
E-mail: irides-pr@grp.tohoku.ac.jp



International Research Institute of Disaster Science

SENDERS



GREETINGS

Director and Professor of IRIDeS, Tohoku University
Shinichi Kuriyama



We contribute to the creation and accumulation of disaster science the world needs, share our gained knowledge swiftly with others, and practice it locally and globally.

The International Research Institute of Disaster Science (IRIDeS) was founded approximately one year after the 2011 Great East Japan Earthquake and Tsunami, as Tohoku University's newest research institution. The Great East Japan Earthquake and Tsunami of March 11, 2011, left approximately 20,000 people dead and devastated much of East Japan. Learning from this experience, Tohoku University launched IRIDeS in April 2012, aiming at preventing catastrophes in the future.

IRIDeS brings together researchers and specialists in diverse areas, including engineering, science, humanities and social sciences, medicine, and disaster risk reduction, to cooperate across disciplinary boundaries. Our mission is to contribute to creating knowledge in disaster science that the world needs, to share the knowledge gained with others swiftly, and put it into practice locally and globally. In collaboration with related institutions in Japan and

abroad, IRIDeS has been committed to elucidating the mechanisms of disasters, including the Great East Japan Earthquake and Tsunami, supporting people and areas affected by disasters, implementing disaster education, and promoting the global agenda of the "Sendai Framework for Disaster Risk Reduction 2015-2030."

Whereas the areas affected by the 2011 disaster are entering a new phase of recovery, society is facing increasingly severe disasters due to climate change and significant earthquake risks in various regions. The most important goal of IRIDeS is to help those who have been affected by disasters, including the Great East Japan Earthquake and Tsunami, and those who may be affected by future disasters. We will continue to work toward building a resilient society and achieving disaster risk reduction for each individual. We look forward to your continued support in the future.

PHILOSOPHY

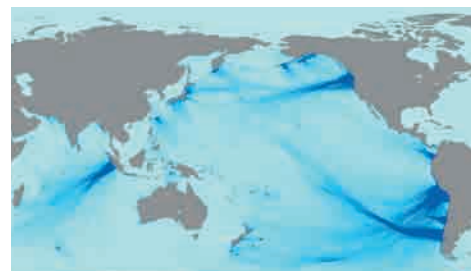
Founding principles based on lessons learned from the Great East Japan Earthquake and Tsunami

- 1 **Bring together the wisdom of Tohoku University to contribute to the recovery of the disaster area. Help people affected by disasters, including the Great East Japan Earthquake and Tsunami.**
- 2 **Create and accumulate knowledge of disaster science the world needs in cooperation with relevant organizations in Japan and abroad. Share our gained knowledge swiftly with others and practice it locally and globally.**
- 3 **Promote the Sendai Framework for Disaster Risk Reduction 2015-2030 and other global agendas, contributing to disaster reduction in the world.**

ORGANIZATION

Risk Evaluation and Disaster Mitigation Research Division

Conducts advanced research on disaster evaluation and response, both in Japan and abroad, through the integration of science and engineering. This division also presents concrete proposals that will lead to disaster risk reduction.



Disaster Humanities and Social Science Division

Contributes to disaster risk reduction and recovery by studying regional societies across the globe, in particular in their relation to human mind and behavior, architecture, social infrastructure, in order to pass on lessons learned to future generations.



Disaster Medical Science Division

Conducts research on the continuum between pre-disaster to recovery, aiming at establishing disaster medicine for wide-area and complex disasters, and introducing the latest science and technology to the field.



Practical Research and Collaboration Division

Works both on practical studies and on application of research outcomes through regional and international cooperation, contributing to the implementation of the Sendai Framework for Disaster Risk Reduction.



Endowed Research Division

Conducts research and education activities with donations from corporations.

Joint Research Division

Aims at practical use of research outcomes, working with funds and researchers from companies.

Co-creation Center for Disaster Resilience

Builds "convergence of knowledge" with diverse stakeholders to maximize disaster resilience.

Global Centre for Disaster Statistics

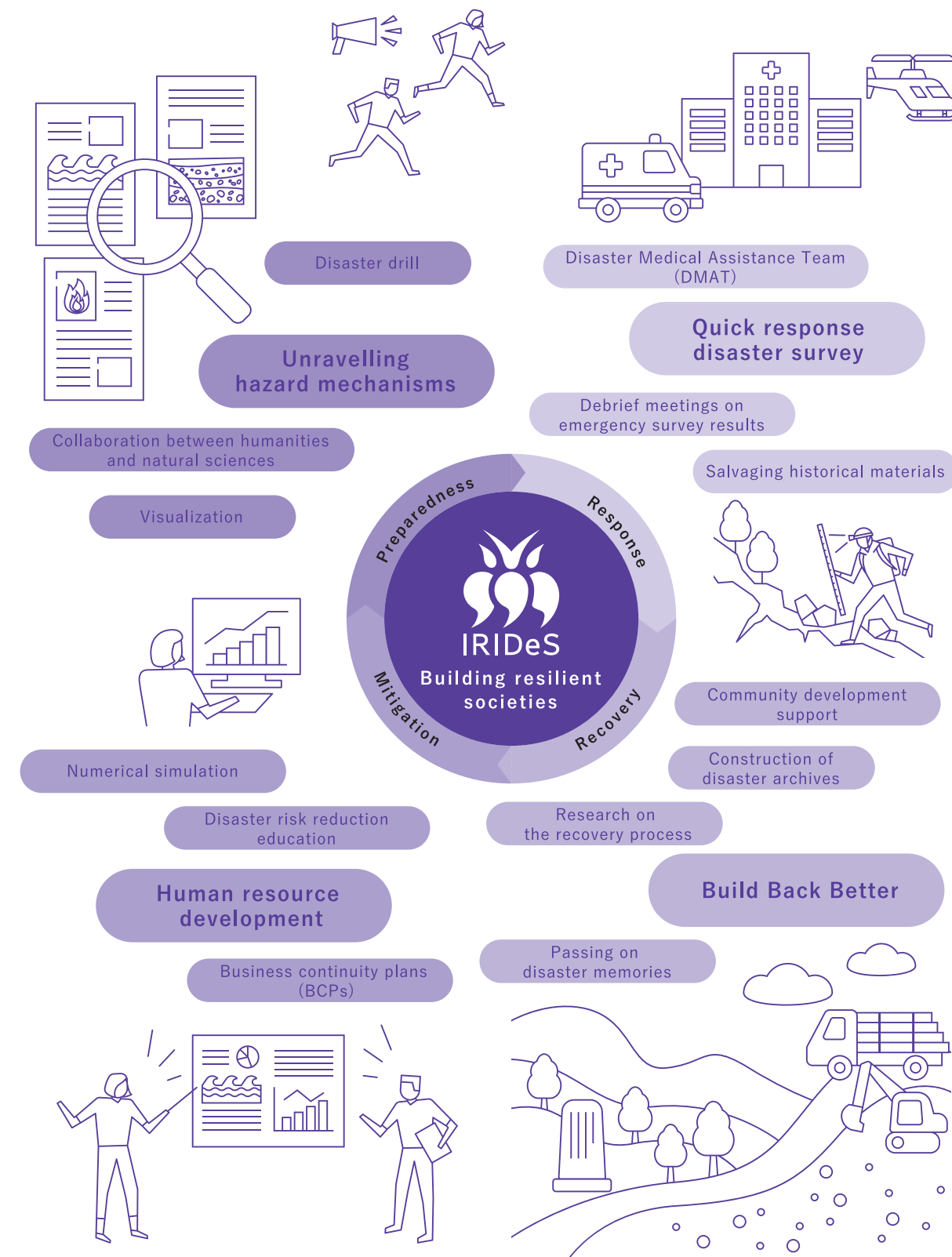
Contributes to global disaster risk reduction by collecting and analyzing disaster statistics.

Kesennuma Satellite Office

Shares research results and advances exchanges with practitioners and citizens.

IRIDeS INITIATIVES

With our most important goal to help people affected by disasters, including the Great East Japan Earthquake and Tsunami, we promote the Sendai Framework for Disaster Risk Reduction 2015-2030 and other global agendas, aiming at building a resilient society.



IRIDeS UPDATES

Recent news

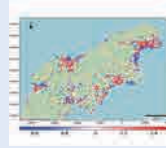
Held the World BOSAI Forum 2023 and made recommendations for the interim assessment of the UN High-Level Meeting



Survey and Analysis of the Türkiye-Syria Earthquake and the 2024 Noto Peninsula Earthquake



Survey in Türkiye

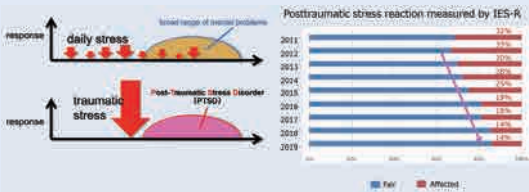


Population changes immediately after the Noto Peninsula Earthquake

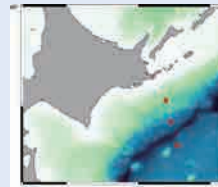


Tsunami trace survey (Kurobe city, Toyama Prefecture)

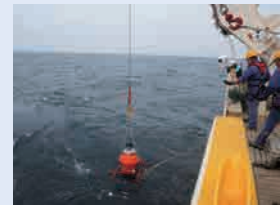
Impact of large-scale disasters on mental health



Seafloor geodetic observations off Tohoku and Hokkaido



Map of the stations off Hokkaido

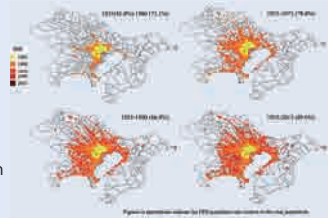


Disaster Digital Twin

On-line Visual Inspection of Building Damage from the 2024 Noto Peninsula Earthquake and Tsunami
- Approved by Geospatial Information Authority of Japan (GSI) RSJH641 -



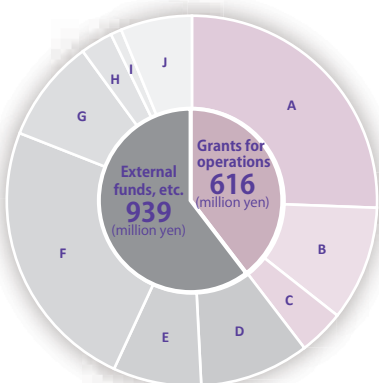
New Perspectives on the Great Kanto Earthquake



Changes in DID distribution in Tokyo metropolitan area (1925-2015)

For more information, please visit the IRIDeS website: <https://irides.tohoku.ac.jp/eng/>

FY 2023 financial report



1,555 million yen

- A Grants for operations (Faculty personnel expenses) 398
- B Grants for operations (Education and research expenses) 156
- C Grants for operations (Functional enhancement expenses) 62
- D Indirect expenses 149
- E Grants-in-Aid for Scientific Research 120
- F Commissioned research expenses 374
- G Cooperative research expenses 140
- H Commissioned project expenses 44
- I Other grants 15
- J Donations 97 (million yen)

Faculty & staff members

As of March, 2024

228

65 Fulltime Faculty

- 20 Professors ● 24 Associate Professors ● 1 Lecturers
- 18 Assistant Professors ● 2 Research Associates

47 Adjunct Faculty

- 31 Professors ● 12 Associate Professors ● 1 Lecturers
- 3 Assistant Professors

97 other members

19 Administration Office staff members

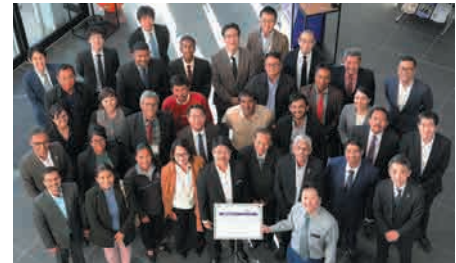
IRIDeS UPDATES

International collaborative projects

In cooperation with the United Nations, universities, and research institutes around the world, we promote cutting-edge research and practice in the fields of disaster science and disaster risk reduction.



China, Egypt, France, Germany, Indonesia, Malaysia, New Zealand, Peru, Slovakia, Sri Lank, Sweden, Taiwan, Thailand, UK, USA, and international organizations



Global Centre for Disaster Statistics

led by Tohoku University, and United Nations Development Programme (UNDP).

- Established the International Research Collaboration Office
- Convene the World Bosai Forum
- Lead the APRU disaster risk reduction activities
- Work with AIWEST

Collaborative projects in Japan

We support recovery of areas affected by the Great East Japan Earthquake as well as disaster risk reduction activities of local communities.

- Community planning, Evacuation drills, and Disaster risk reduction education

Local governments

Iwate Prefecture

Miyako City, Otsuchi Town, Rikuzentakata City

Miyagi Prefecture

Higashi Matsushima City, Ishinomaki City, City of Iwanuma, Kesennuma City, Marumori Town, City of Natori, City of Sendai, Shioyama City, Tagajo City, Watari Town, Yamamoto Town

Fukushima Prefecture

Iwaki City

Memorial Museum

Iwate Prefecture

Iwate Tsunami Memorial Museum

Other (National Institutions)

Cultural Heritage Disaster Risk Management Center
Nara National Research Institute for Cultural Properties
National Diet Library
National Institute of Public Health
National Museum of Japanese History
National Research Institute for Earth and Disaster Resilience
Port and Airport Research Institute

Educational Institutions

Aomori Prefecture

Research Center for Technology in Infrastructure, Disaster Reduction and Social System, Hachinohe Institute of Technology

Miyagi Prefecture

311 DRR-LIFE, Miyagi University of Education
Miyagi Prefecture Tagajo High School

Fukushima Prefecture

National Institute of Technology (KOSEN), Fukushima College

Niigata Prefecture

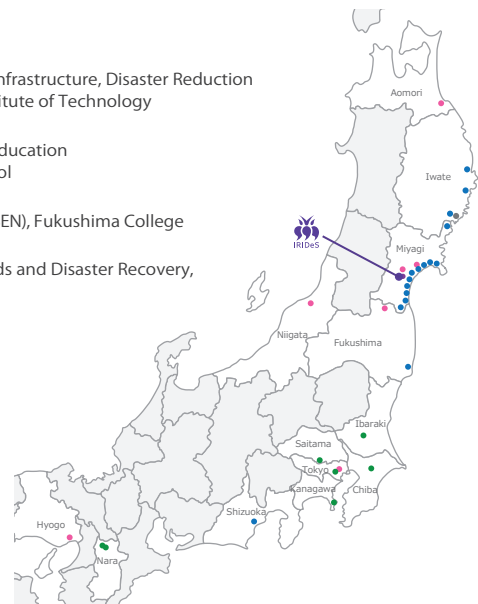
Research Institute for Natural Hazards and Disaster Recovery, Niigata University

Hyogo Prefecture

Graduate School of Humanities and Faculty of Letters, Kobe University

Kesennuma Satellite Office

Promotes regional collaboration



We provide places to share outcomes of our research and practices with the public and to develop collaboration with diverse stakeholders.

Public Events

We hold symposiums and other open events with various themes related to disaster and disaster risk reduction.

Exhibition Spaces

The 1st and 2nd floors of the IRIDeS building are open to the public to display aspects of current research.

Others

Participation in Tohoku University Katahira Festival and Open Campus/Hold symposiums

Please check the IRIDeS website for the latest information.